



Arkansas State Highway Commission Meeting

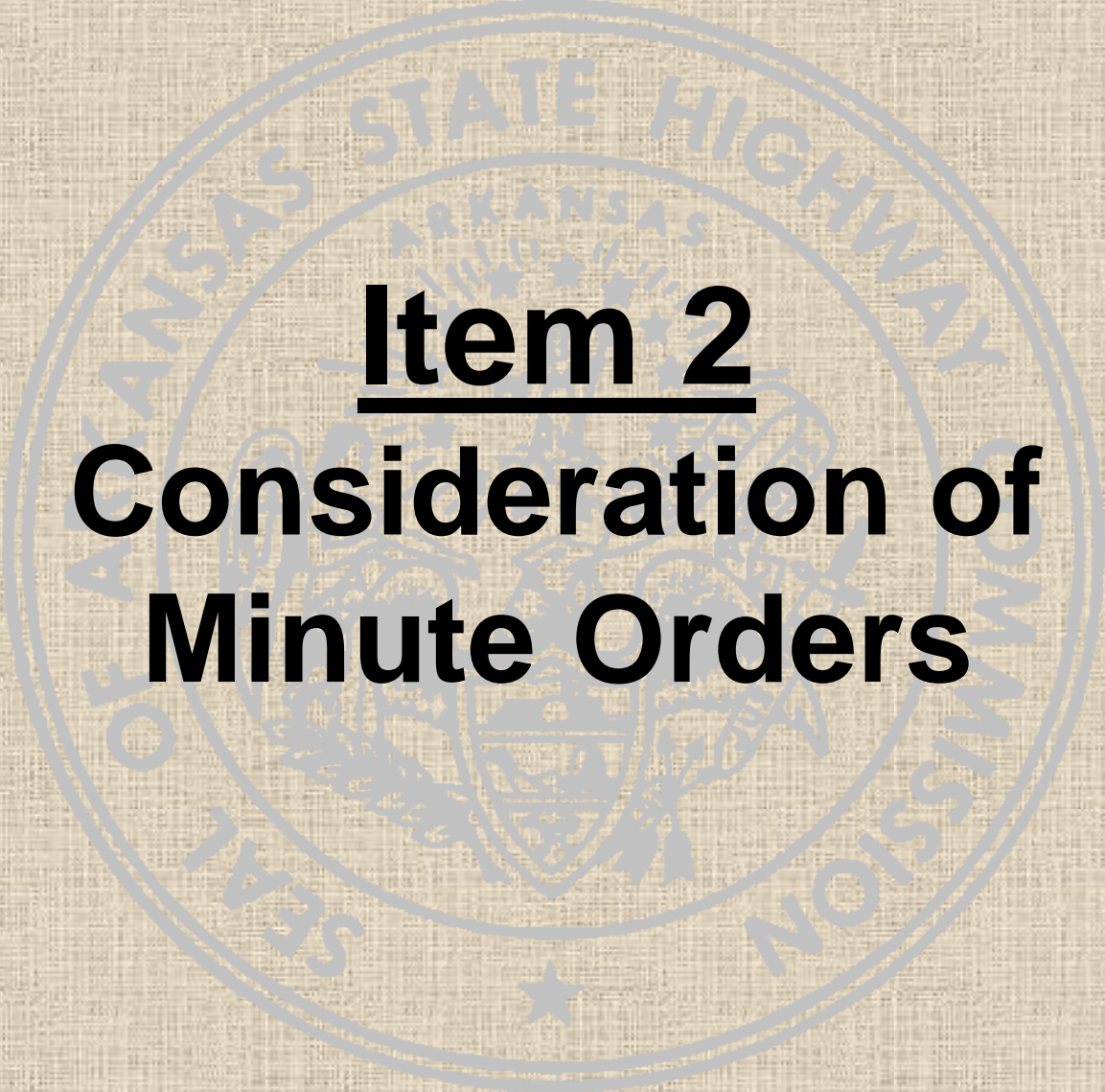
Wednesday, October 30, 2013

The background features a large, faint, circular seal of the Arkansas State Highway Commission. The seal contains the text "ARKANSAS STATE HIGHWAY COMMISSION" around the perimeter and a central emblem with a shield and stars.

Item 1

Minutes

September 11, 2013 Meeting

The background features a large, faint, circular seal of the Arkansas State Highway Commission. The seal contains the text "ARKANSAS STATE HIGHWAY COMMISSION" around the perimeter and a central emblem with a shield and stars.

Item 2
**Consideration of
Minute Orders**

The background features a large, faint, circular seal of the Arkansas State Highway Commission. The seal contains the text "SEAL OF ARKANSAS STATE HIGHWAY COMMISSION" around the perimeter and "ARKANSAS" in the center. In the center of the seal is a smaller emblem with a shield and a star.

Item 3

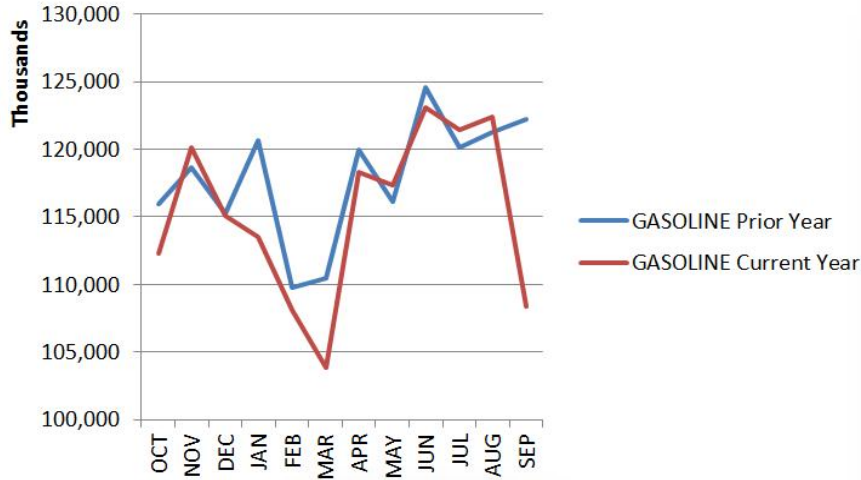
**State Highway Revenue
Update**

September 2013 Revenues and Consumption

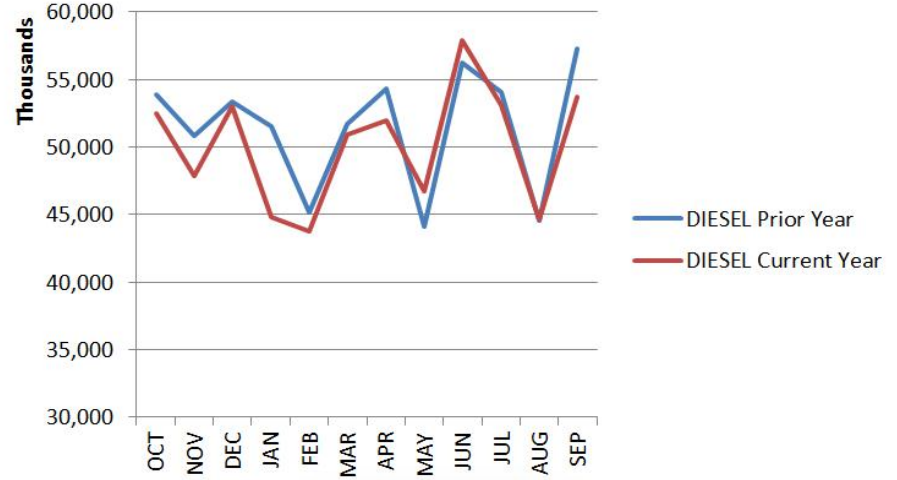
July - Sept	FY 2013	FY 2014	Variance	% Change
Motor Fuels Tax	\$70.5	\$68.0	(\$2.5)	-3.6%
Registration Fees	\$21.2	\$21.5	\$0.3	1.4%
Permits & Penalties	\$4.8	\$4.6	(\$0.2)	-4.2%
Other	\$1.9	\$2.0	\$0.1	5.3%
Total User Revenues	\$98.4	\$96.1	(\$2.3)	-2.3%
Natural Gas Severance Tax	\$5.4	\$11.3	\$5.9	109.3%
RRA Interest	\$0.6	\$0.8	\$0.2	33.3%
Less: Diesel Tax for Bonds	(\$4.3)	(\$4.1)	\$0.2	-4.7%
Total Revenues Available	\$100.1	\$104.1	\$4.0	4.0%
Fiscal 2014 Projected vs. Actual July - Sept	Budget (millions)	Actual (millions)	Variance (millions)	% Variance
Motor Fuels Tax	\$69.2	\$68.0	(\$1.2)	-1.7%
Registration Fees	\$21.2	\$21.5	\$0.3	1.4%
Permits & Penalties	\$4.8	\$4.6	(\$0.2)	-4.2%
Other	\$1.2	\$2.0	\$0.8	66.7%
Total User Revenues	\$96.4	\$96.1	(\$0.3)	-0.3%
Natural Gas Severance Tax	\$9.2	\$11.3	\$2.1	22.8%
RRA Interest	\$0.6	\$0.8	\$0.2	33.3%
Less: Diesel Tax for Bonds	(\$4.2)	(\$4.1)	\$0.1	-2.4%
Total Revenues Available	\$102.0	\$104.1	\$2.1	2.1%
Fiscal 2014 Projected vs. Actual July - Sept	FY 2013 (millions)	FY 2014 (millions)	Difference (millions)	% Change
Gasoline	\$363.6	\$352.4	-11.2	-3.1%
Diesel	\$155.9	\$151.5	-4.4	-2.8%
Total	\$519.5	\$503.9	-15.6	-3.0%

Fuel Consumption

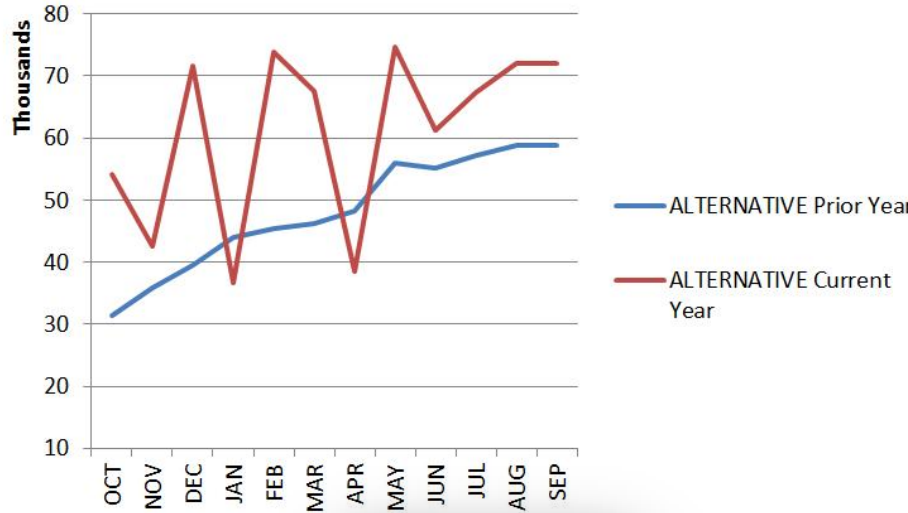
October 2012 – September 2013



Gasoline



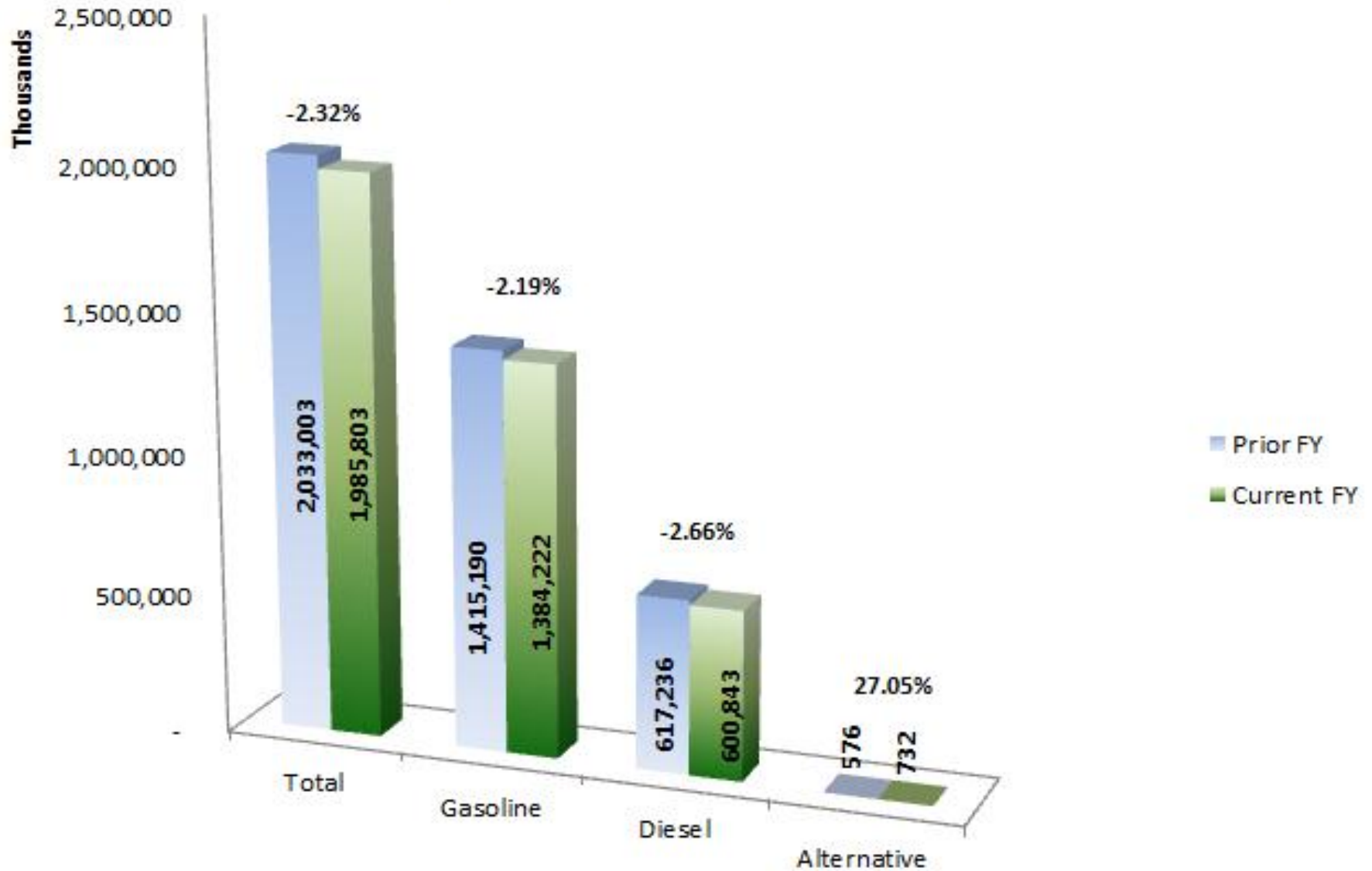
Diesel



Alternative

Fuel Consumption

Gallons



Projected Sales Tax vs. Actual

Month	Projected Net	Actual Receipts	Variance	Monthly Variance	Annual Variance
Jul	\$5,950,000.00	\$6,205,659.77	\$255,659.77	4.30%	4.30%
Aug	\$13,930,000.00	\$12,923,708.99	\$(1,006,291.01)	-7.22%	-3.78%
Sept	\$13,860,000.00	\$13,462,454.84	\$(397,545.16)	-2.87%	-3.40%
Oct	\$13,300,000.00				
Nov	\$13,160,000.00				
Dec	\$13,860,000.00				
Jan	\$13,860,000.00				
Feb	\$13,230,000.00				
Mar	\$13,300,000.00				
Apr	\$13,650,000.00				
May	\$13,790,000.00				
Jun	\$13,930,000.00				
Total	\$155,820,000.00	\$32,591,823.60	\$(1,148,176.40)		

The background features a large, faint, circular seal of the Arkansas State Highway Department. The seal contains the text "ARKANSAS STATE HIGHWAY DEPARTMENT" around the perimeter and "ARKANSAS" in the center. A five-pointed star is positioned at the bottom center of the seal.

Item 4

Status of Federal Highway & Transit Funding Issues



Legislation

- **Moving Ahead for Progress in the 21st Century (MAP-21)**
 - Effective through September 30, 2014
- **Consolidated and Further Continuing Appropriations Act of 2013**
 - Expired September 30, 2013
- **Continuing Appropriations Act for 2014**
 - Effective through January 15, 2014

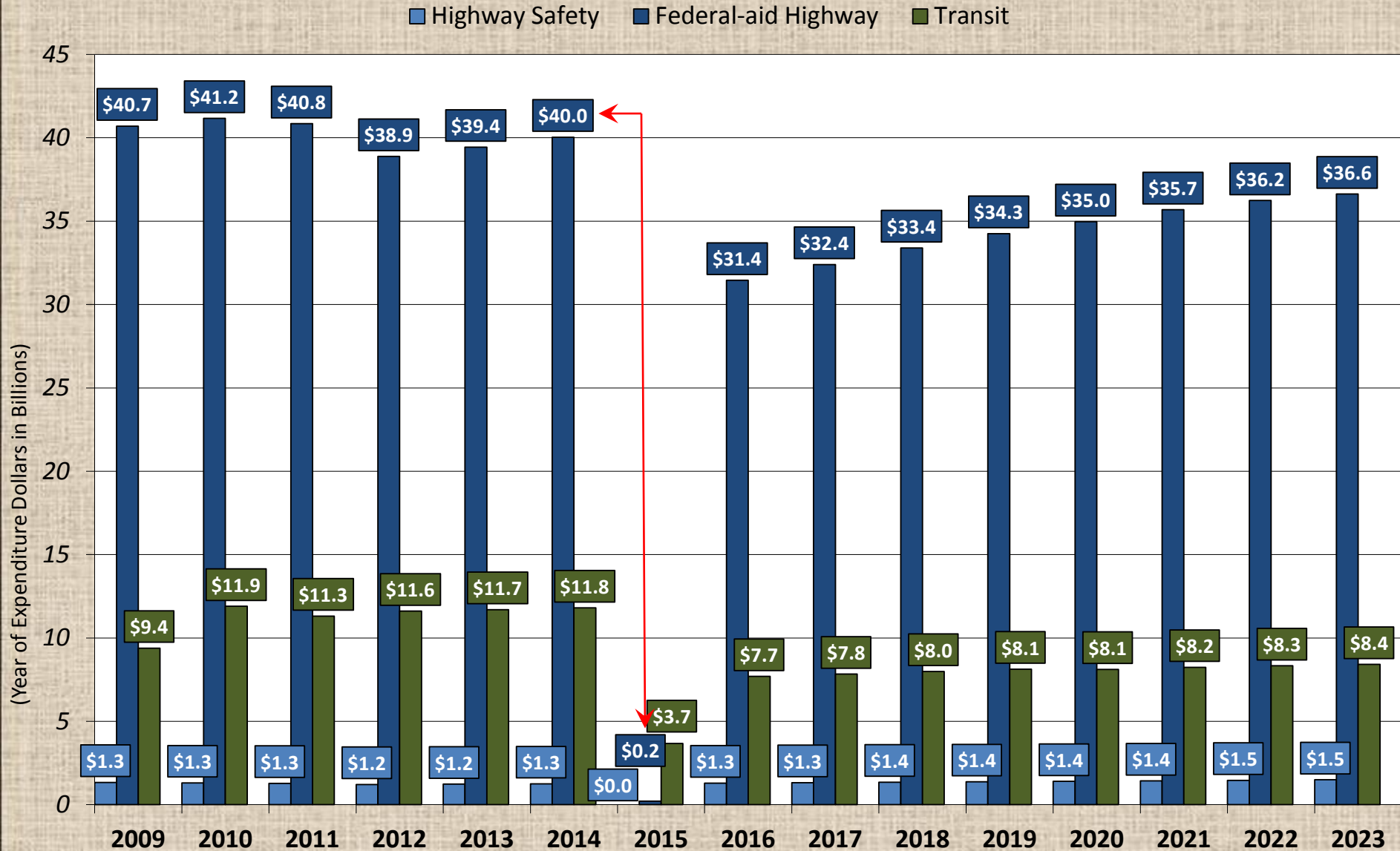


MAP-21 Reauthorization

- **American Association of State Highway and Transportation Officials (AASHTO)**
 - MAP-21 Surface Transportation Reauthorization Policy Resolution on Funding and Finance
 - General Fund Transfers to the Highway Trust Fund (\$53.3 Billion)
 - Motor Fuel Taxes - Loss of Purchasing Power
 - Outlays Exceed Receipts
 - No Action from Congress – Fiscal Cliff FY 2015
 - No New Commitments
 - Possible Delays in Federal Reimbursements

HIGHWAY TRUST FUND

ESTIMATED FEDERAL HIGHWAY AND TRANSIT PROGRAM FUNDING LEVELS WITH NO NET NEW REVENUES





MAP-21 Reauthorization

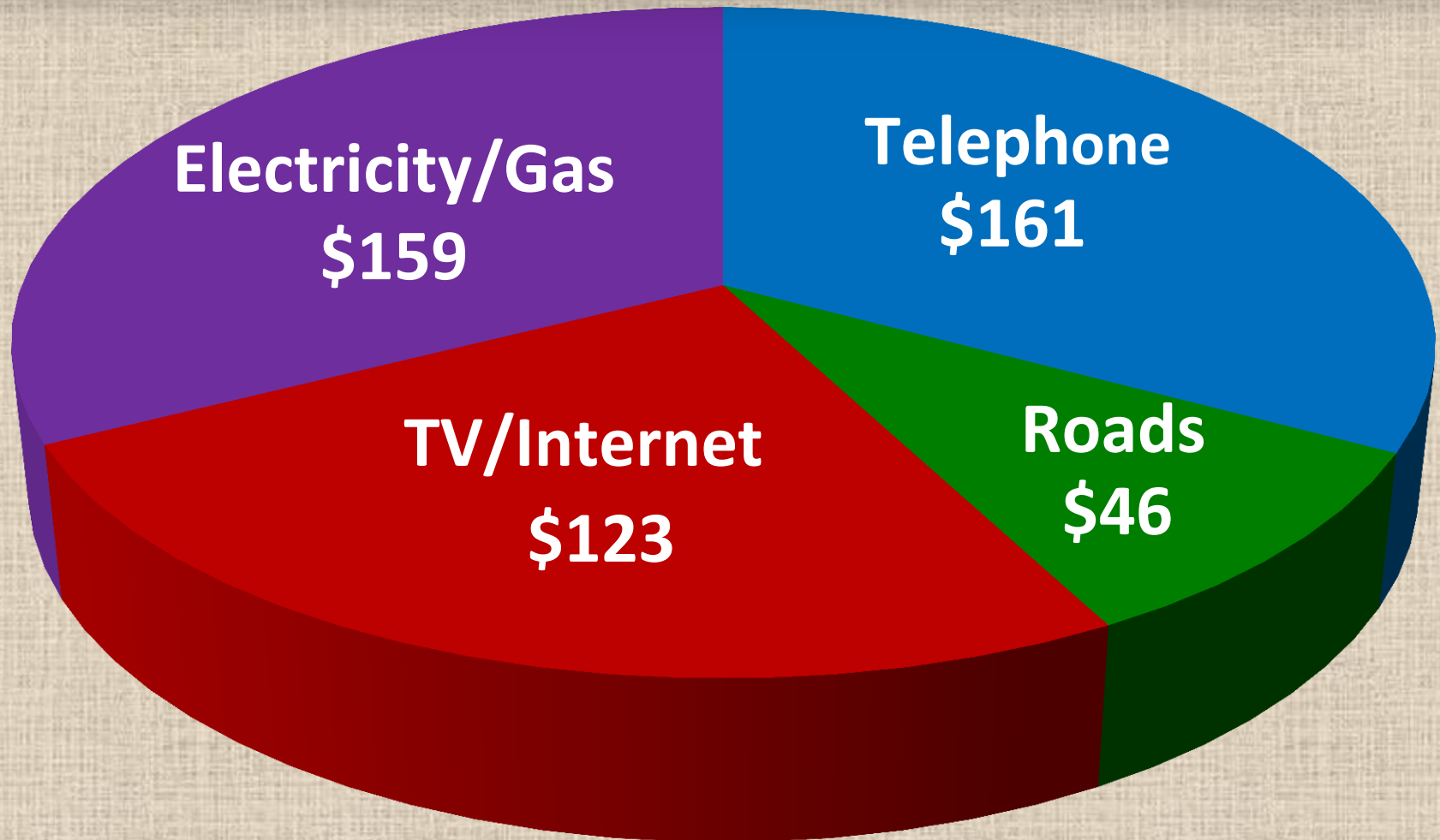
- **American Association of State Highway and Transportation Officials (AASHTO)**
 - MAP-21 Surface Transportation Reauthorization Policy Resolution on Funding and Finance
 - Federal Government must Continue to Play a Vibrant and Stable Funding Roll
 - Support Access and Connectivity to the National Transportation System
 - Advance the National Economic Well-Being and Global Competitiveness
 - Consider a Variety of Existing and Proposed Sustainable Revenue Mechanisms
 - MAP-21 Reauthorization - Six Year Period



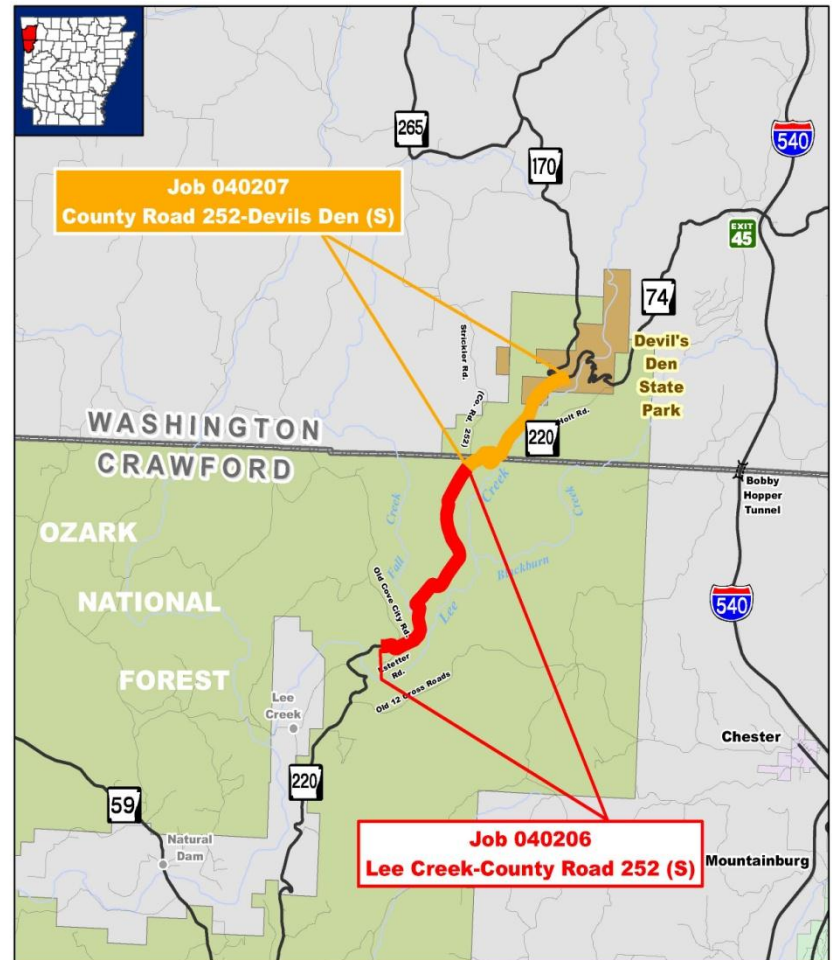
MAP-21 Reauthorization

Investment Level (2015 – 2020)	Average Investment Amount Per Year	Additional Needed Monthly Per Household
Maintain Existing MAP-21 Levels	\$57.1 B	\$10.23
11% Increase Adjusted for Inflation	\$63.1 B	\$13.52
1993 Levels Adjusted for Inflation	\$73.3 B	\$19.06

Average Monthly Household Expenditures



Federal Lands Access Program (FLAP)



Job 040206
Lee Creek-County Road 252 (S)

Job 040207
County Road 252-Devil's Den (S)

Hwy. 220, Secs. 2 & 3
Crawford & Washington Counties



Highway 220
Crawford and Washington Counties
Lee Creek – Devil's Den
7.7 miles
Reconstruct and Surface Gravel Road

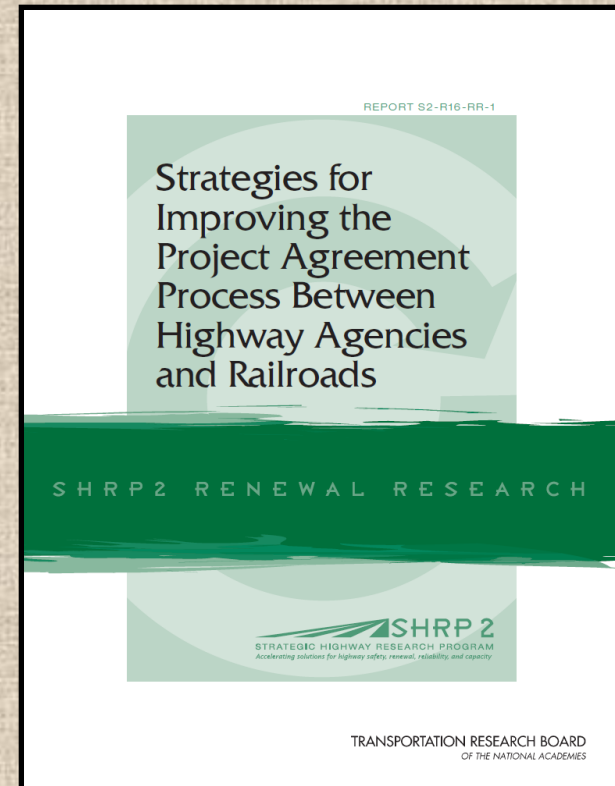
Strategic Highway Research Program (SHRP2)

- ✓ **Authorized by Congress in 2005**
- ✓ **Focus Areas**
 - Safety, Renewal, Reliability, Capacity
- ✓ **Implementation Assistance Programs**
 - Funding for Technical Assistance
 - 100% Federal funds
 - Eligibility

Strategic Highway Research Program (SHRP2)

Railroad – DOT Mitigation Strategies

- ✓ Funding: \$75,000
- ✓ Strategies:
 - Best Practices and Streamlined Processes
 - Standardized Model Agreements
- ✓ Benefits:
 - Reduce Project Delays
 - Reduce Project Costs
 - Reduce Disruption to Users

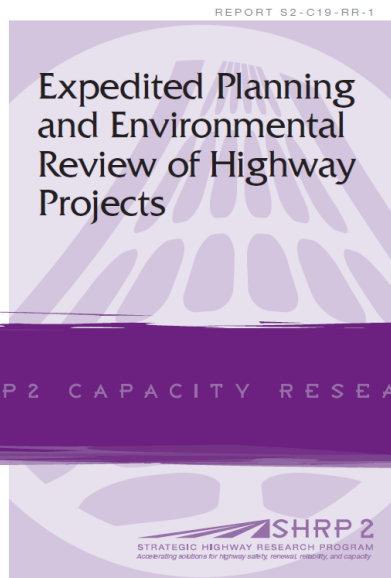


Strategic Highway Research Program (SHRP2)

Expediting Project Delivery

- ✓ Funding: \$50,000
- ✓ Strategies:

- Improve Internal Coordination and Communication
- Streamline Decision Making
- Improve Resource Agency Collaboration
- Improve Public Involvement and Support
- Demonstrate Real Commitment to the Project
- Coordinate Work Across Phases of Delivery



American Recovery and Reinvestment Act (ARRA)

- ✓ **Enacted February 17, 2009**
- ✓ **“Shovel Ready” Highway and Transit Projects**
- ✓ **\$35.5 Billion Nationally**
- ✓ **\$367 Million to Arkansas**
- ✓ **Deadlines:**
 - **Projects Obligated by July 31, 2010**
 - **Funds Expended by September 30, 2013**



ARRA



Highway 247, Highway 7 East (Russellville Bypass)



Highway 71 Relocation
Louisiana Line to Doddridge

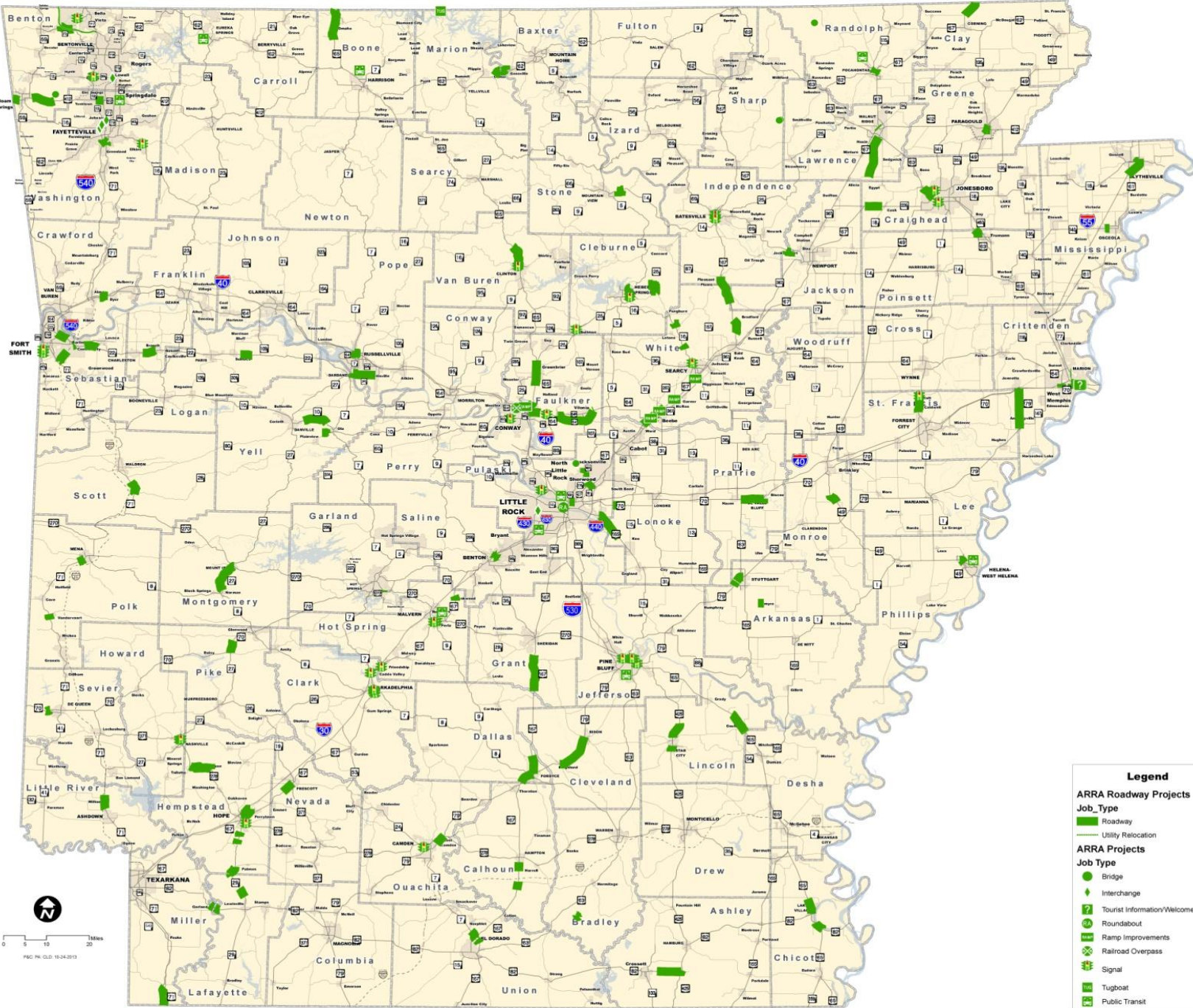


Interstate 40
Ramp Relocations (West Memphis)

✓ Summary of Highway Projects

- 133 Roadway Contracts
- \$437 Million Total Cost
- 299 miles
- Supported 1,445 Full Time Employees

ARRA Projects



Legend

ARRA Roadway Projects

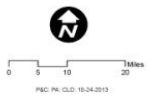
Job_Type

- █ Roadway
- Utility Relocation

ARRA Projects

Job Type

- Bridge
- ◆ Interchange
- ⊕ Tourist Information/Welcom Center
- ⊙ Roundabout
- ⬇ Ramp Improvements
- ⊗ Railroad Overpass
- ⊠ Signal
- ⊞ Tugboat
- ⊡ Public Transit



ARRA

✓ Summary of Transit Projects in Arkansas

- 12 Transit Projects
- \$15.1 Million Total Cost



The background features a large, faint, circular seal of the Arkansas State Highway Commission. The seal contains the text "ARKANSAS STATE HIGHWAY COMMISSION" around the perimeter and "ARKANSAS" in the center. It also includes a central emblem with a shield and stars.

Item 5

**Consultant Services for
Applicant Tracking System**

The background features a large, faint, circular seal of the Arkansas State Highway Commission. The seal contains the text "ARKANSAS STATE HIGHWAY COMMISSION" around the perimeter and "ARKANSAS" in the center. In the center of the seal is a smaller emblem with a shield and a star.

Item 6

**Consultant Services for
Traffic Data Collection**

The background features a large, faint, circular seal of the Arkansas State Highway Commission. The seal contains the text "ARKANSAS STATE HIGHWAY COMMISSION" around the perimeter and "ARKANSAS" in the center. In the center of the seal is a shield with a plow, a sheaf of wheat, and a cotton plant, with a star above it.

Item 7

**Sale of Garvee Bonds for
2011 IRP**

The background of the slide features a large, faint, circular seal of the Arkansas State Highway Commission. The seal contains the text "ARKANSAS STATE HIGHWAY COMMISSION" around the perimeter and "ARKANSAS" in the center. In the center of the seal is a smaller emblem with a star and the words "THE GREAT SEAL OF THE STATE OF ARKANSAS".

Item 8

Update

**2011 Interstate Rehabilitation Program (IRP)
Connecting Arkansas Program (CAP)**

2011 IRP Update

- **November 2011**

- ✓ Approved By Arkansas Voters
- ✓ Authority to Issue \$575 M in Bonds
- ✓ Must be Issued by December 31, 2015

- **September 2012**

- ✓ 1st Series of Bonds Offered for Sale
 - Par Value of \$197 M
 - Premium of \$33 M
 - Total Amount of Bond Proceeds Available for Construction - \$230 M

- **October 2013**

- ✓ 2nd Series of Bonds Offered for Sale
 - Par Value of \$171 M
 - Premium of \$29 M
 - Total Amount of Bond Proceeds Available for Construction - \$200M

IRP Projects Let To Contract

Job Number	County	Route	Job Name	Length	Contract Amount
------------	--------	-------	----------	--------	-----------------

Completed Projects

BB0109	Crittenden	I-55	I-40-Jericho (S)	7.8	7,705,443
BB0403	Crawford / Franklin	I-40	Dyer-Cravens Creek (S)	14.1	9,122,895
Totals				21.9	16,828,337

Project Under Construction

BB0105	St. Francis	I-40	Forrest City-East (F)	7.9	\$51,946,710
BB0407	Sebastian / Crawford	I-540	Hwy. 22-I-40 (F)	7.5	\$78,829,029
BB0614	Pulaski / Saline	I-530	Bingham Rd.-Grant Co. Line	7.5	\$13,525,135
BB0804	Pope	I-40	Mill Creek-Hwy. 331 (F)	7.4	\$42,378,010
BB0806	Pope / Conway	I-40	Atkins-Plumerville (S)	18.6	\$12,350,633
BB1003	Mississippi	I-55	Hwy. 181-Hwy. 158 (F)	7.8	\$28,983,450
Totals				56.7	\$228,012,968

Grand Total - Under Construction and Completed

78.6

244,841,305

IRP Projects Scheduled December 2013 through December 2014

Job Number	County	Route	Job Name	Length (miles)	Estimated Construction Cost
------------	--------	-------	----------	----------------	-----------------------------

Projects Scheduled through December 2014

BB0108	Crittenden	I-40	Hwy. 77-I-55 (F)	2.2	\$29,000,000
BB0412	Washington	I-540	Johnson Mill Blvd. Intchn. Impvts. (S)	0.0	\$2,000,000
BB0101	Monroe	I-40	Cache River-Bayou DeView (F)	4.1	\$19,000,000
BB0104	St. Francis	I-40	Goodwin-Forrest City (S)	11.6	\$12,000,000
BB0106	St. Francis	I-40	Shearerville-West (F)	16.5	\$83,000,000
BB0110	Crittenden	I-55	Jericho-Lake David (S)	8.0	\$7,000,000
BB0303	Miller	I-30	Red River-East & West (F)	1.8	\$18,000,000
BB0306	Hempstead	I-30	Sheppard-Hwy. 278 (S)	7.3	\$20,000,000
BB0410	Washington	I-540	Hwy. 62 Intchn. Impvts. (F)	0.0	\$25,000,000
BB0411	Washington	I-540	Hwy. 16/112 Spur Intchn. Impvts. (S)	0.0	\$19,000,000
BB0413	Washington	I-540	Elm Springs Rd. Intchn. Impvts. (S)	0.0	\$4,000,000
BB0613	Pulaski	I-530	I-30-Bingham Rd. (F)	8.5	\$40,000,000
BB0702	Clark	I-30	Hwy. 26-Caddo River (F)	8.3	\$8,000,000
BB0803	Johnson / Pope	I-40	Hwy. 64-Mill Creek (S)	13.1	\$12,000,000
BB0805	Pope	I-40	Hwy. 331-Atkins (S)	10.8	\$10,000,000
BB0901	Benton	I-540	Wagon Wheel Rd. Intchn. Impvts. (S)	0.0	\$2,000,000
BB0902	Benton	I-540	Hwy. 264 Intchn. Impvts. (S)	0.0	\$5,000,000
BB1006	Mississippi	I-55	No. of Hwy. 18-Missouri St Line (S)	4.2	\$18,000,000
BB1103	Franklin / Johnson	I-40	Ozark-Hwy. 164 (S)	10.8	\$7,000,000
Totals				107.2	\$340,000,000

Grand Total - Under Construction, Completed, and Scheduled through December 2014

185.8

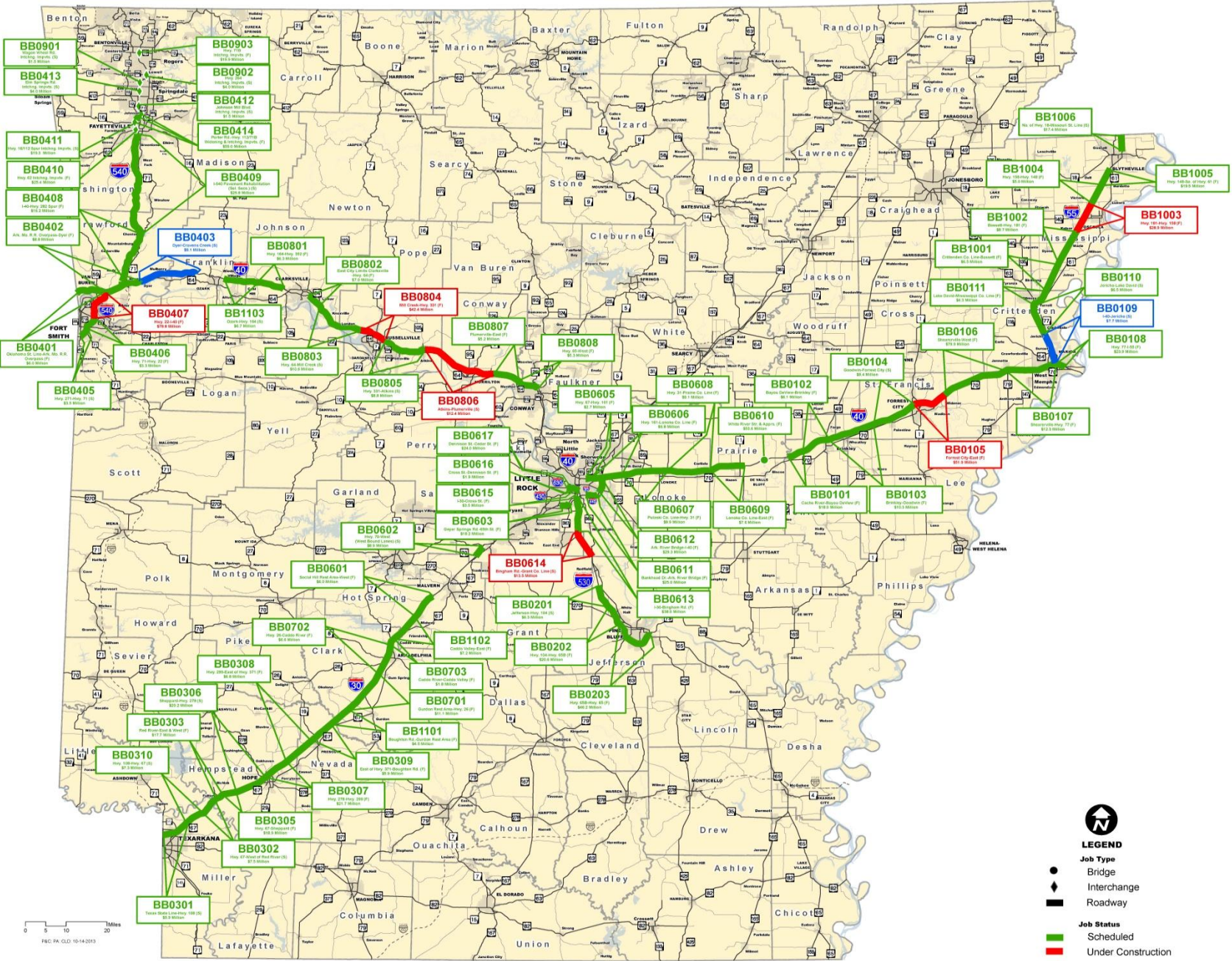
584,841,305

2011 IRP Project Update

Status	Number of Projects	Length (miles)	Amount
Completed	2	21.9	16,828,337
Under Construction	6	56.7	228,012,968
Scheduled through December 2014	19	107.2	340,000,000
Sub-Total	27	185.8	584,841,305
Remaining Scheduled through 2022	47	262.8	624,682,228
Grand Total	74	448.6	1,209,523,533

Interstate Rehabilitation Program

Job Status



0 5 10 15 20 Miles
FBC PA. CLD 10-14-2013



**Interstate 55
Crittenden County**

I-40 to Jericho

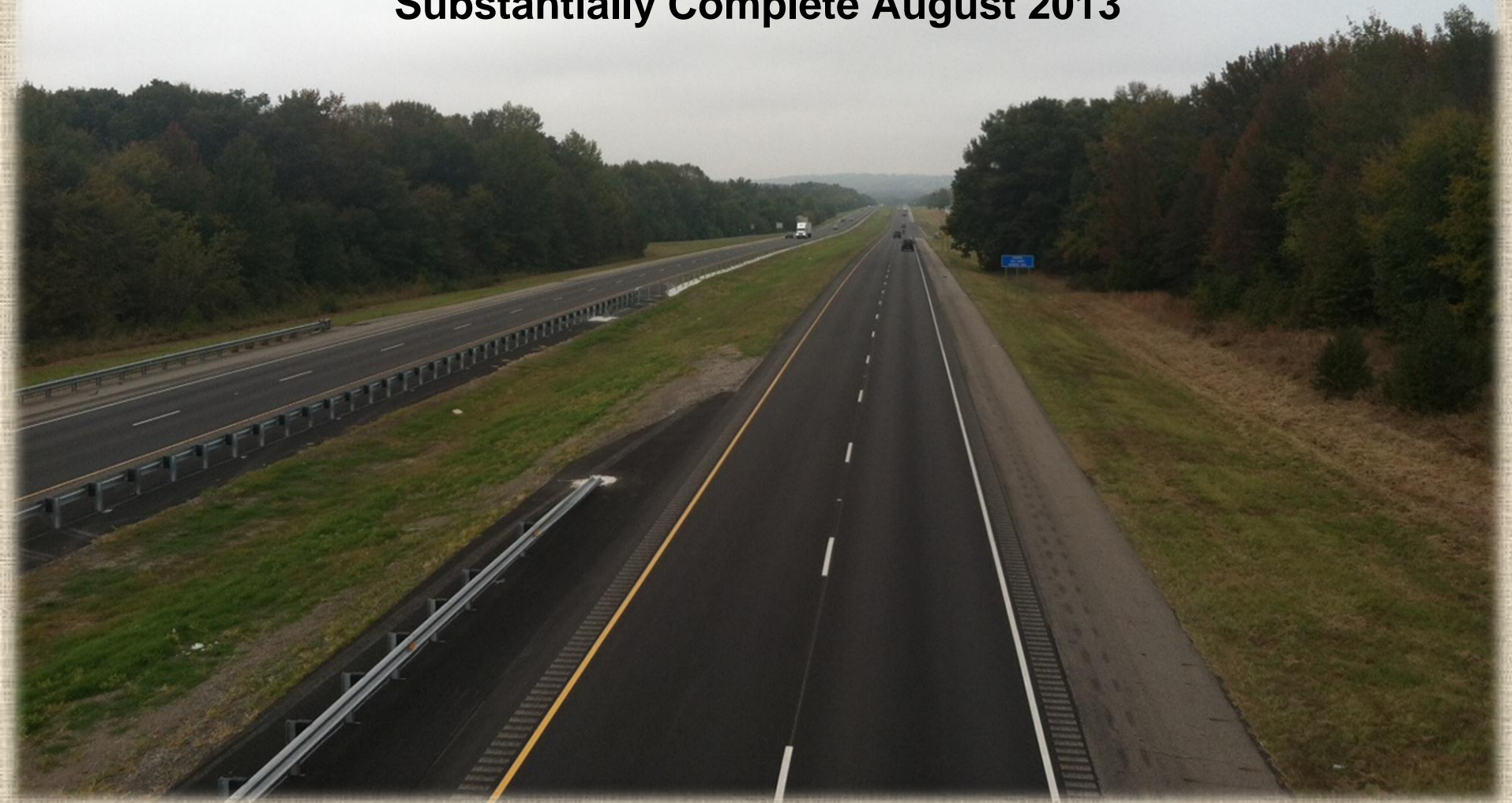
7.8 miles

\$7.7 million

Substantially Complete August 2013



**Interstate 40
Crawford & Franklin Counties
Dyer to Cravens Creek
14.1 miles
\$9.1 million
Substantially Complete August 2013**



CAP Update

- **November 2012**

- ✓ Approved By Arkansas Voters
- ✓ Authority to Issue up to \$1.3 Billion in Bonds
- ✓ Capacity Improvements to 19 Corridors

- **September 2013**

- ✓ 1st Series of Bonds Offered for Sale
 - **Par Value of \$469 M**
 - **Premium of \$25 M**
 - **Total Amount of Bond Proceeds Available for Construction - \$494 M**

- **Progress to Date**

- ✓ Notice to Proceed Issued to Program Manager – April 1, 2013
- ✓ Design is Underway on 19 of 31 Projects
- ✓ Delivery Strategy for I-30 **Widening Project** – Design/Build to a Budget
- ✓ **CAP Website Launched – September 2013**
www.connectingarkansasprogram.com



CAP Projects Scheduled December 2013 through December 2014

Job Number	County	Route	Job Name	Length (miles)	Estimated Construction Cost
------------	--------	-------	----------	----------------	-----------------------------

Projects Scheduled through December 2014

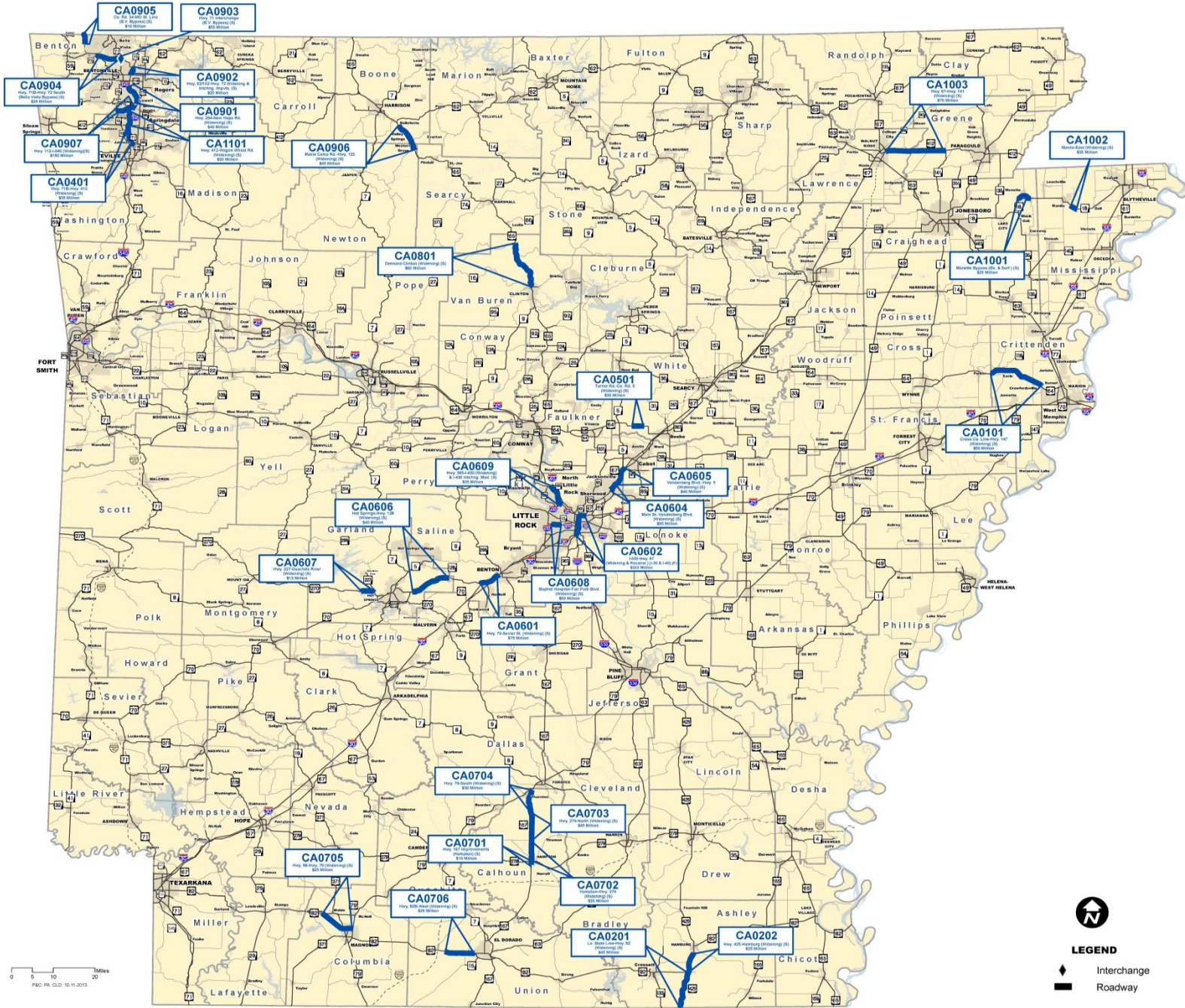
CA0603	Pulaski	40	Hwy. 365 - I-430 (Widening) (S)	5.6	\$21,000,000
CA0904	Benton	71	Hwy. 71B - Hwy. 72 South (Bella Vista Bypass) (S)	6.2	\$30,000,000
CA0907	Benton	412	Hwy. 112 - I-540 (S)	4.3	\$125,000,000
Totals				10.5	\$155,000,000

Grand Total - Under Construction, Completed, and Scheduled through December 2014	10.5	155,000,000
---	-------------	--------------------

CAP Project Update

Status	Number of Projects	Length (miles)	Amount
Scheduled through December 2014	3	10.5	155,000,000
Sub-Total	3	10.5	155,000,000
Remaining Scheduled through 2019	28	167.3	1,302,800,000
Grand Total	31	177.8	1,457,800,000

Connecting Arkansas Program



0 5 10 20 Miles
 F&C PA GLD 10-11-2013

LEGEND

- North
- Interchange
- Roadway



The background of the slide features a large, faint, circular seal of the Arkansas State Highway Commission. The seal contains the text "ARKANSAS STATE HIGHWAY COMMISSION" around the perimeter and "ARKANSAS" in the center. In the center of the seal is a smaller emblem with a star and other symbols.

Item 9

**Travel and Construction
Information Website**



THE **I-Plan**

Investing in **I**nfrastructure **I**mprovements

A COMMUNICATIONS AND MARKETING PLAN

for the



prepared by

THE AHTD PUBLIC INFORMATION OFFICE

April 2013



IMPROVEMENTS
UNDERWAY

PROJECT COMPLETE!

0.8 MILES

ST. COMPL. SEPT 2014

CHECK TRAVEL CONDITIONS AT



I DRIVE
ARKANSAS.COM

Travel Smart. Travel Safe.



ARKANSAS STATE HIGHWAY AND TRANSPORTATION DEPT.




**1 DRIVE
ARKANSAS**

Travel Smart. Travel Safe.

The background features a large, faint, circular seal of the Arkansas State Highway Commission. The seal contains the text "ARKANSAS STATE HIGHWAY COMMISSION" around the perimeter and a central emblem with a shield and stars.

Item 10
**Other Business &
Discussion**



Arkansas State Highway Commission Meeting

Wednesday, October 30, 2013

Revenues and Consumption

September 2013

REVENUES

Comparison of AHTD State Revenues by Fiscal Year

July - September	FY 2013 (Millions)	FY 2014 (Millions)	Variance (Millions)	Percent Change
Motor Fuel Taxes	\$70.5	\$68.0	(\$2.5)	-3.6%
Registration Fees	\$21.2	\$21.5	\$0.3	1.4%
Permits & Penalties	\$4.8	\$4.6	(\$0.2)	-4.2%
Other	\$1.9	\$2.0	\$0.1	5.3%
Total User Revenues	\$98.4	\$96.1	(\$2.3)	-2.3%
Natural Gas Severance Tax	\$5.4	\$11.3	\$5.9	109.3%
RRA Interest	\$0.6	\$0.8	\$0.2	33.3%
Less: Diesel Tax for Bonds	(\$4.3)	(\$4.1)	\$0.2	-4.7%
Total Revenues Available	\$100.1	\$104.1	\$4.0	4.0%

Fiscal Year 2014 Projected vs. Actual

July - September	Budget (Millions)	Actual (Millions)	Variance (Millions)	Percent Variance
Motor Fuel Taxes	\$69.2	\$68.0	(\$1.2)	-1.7%
Registration Fees	\$21.2	\$21.5	\$0.3	1.4%
Permits & Penalties	\$4.8	\$4.6	(\$0.2)	-4.2%
Other	\$1.2	\$2.0	\$0.8	66.7%
Total User Revenues	\$96.4	\$96.1	(\$0.3)	-0.3%
Natural Gas Severance Tax	\$9.2	\$11.3	\$2.1	22.8%
RRA Interest	\$0.6	\$0.8	\$0.2	33.3%
Less: Diesel Tax for Bonds	(\$4.2)	(\$4.1)	\$0.1	-2.4%
Total Revenues Available	\$102.0	\$104.1	\$2.1	2.1%

CONSUMPTION

Taxable Motor Fuel Gallons Reported

July - September	FY 2013 (Millions)	FY 2014 (Millions)	Difference (Millions)	Percent Change
Gasoline	363.6	352.4	-11.2	-3.1%
Diesel	155.9	151.5	-4.4	-2.8%
Total	519.5	503.9	-15.6	-3.0%